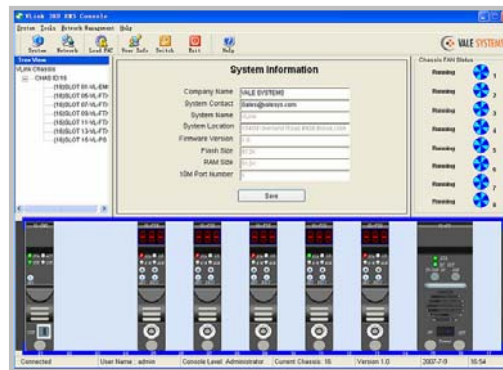


# VL-EMS Management Module

## Description

The VL-EMS equipment management module is mounted in the first slot of the VLink platform to provide local monitoring and configuration, as well as remote management. The VL-EMS module is able to communicate with the rest of the modules via USB port for local access or RJ45 Ethernet port for remote access. The VL-EMS module provides NMCP (Network Management Console Program) for monitoring and configuration along with a PC compatible graphical user interface(GUI). The VL-EMS integrates the SNMP protocol and the SCTE-HMS-MIBs for remote access via a standard SNMP agent.



## Specifications

Parameter	Unit	Specification	Note
<b>Communication Interface</b>			
USB port		USB B type , 115200bps	--
Ethernet port		RJ45 , SNMP , 10Mbps manual	--
<b>Other</b>			
Operating temperature	°C	0 to 50	--
Storage temperature	°C	-40 to 70	--
Humidity	%	Max 85% , non-condensing	--
Dimensions	mm	395Dx24Wx128H	--
Weight	Kg	1	--
Power consumption	W	<5	--

## Features

- Short circuit protection
- USB interface for local monitoring and setting
- RJ45 10Mbps Ethernet port for communication with SNMP
- LEDs to indicate data access activity
- Hot-swap design
- Firmware field upgradeable

## Ordering Information

VL	--	EMS	--	XX
VL	--	CS	--	XX
VL	--	NC	--	XX
				Customer specify